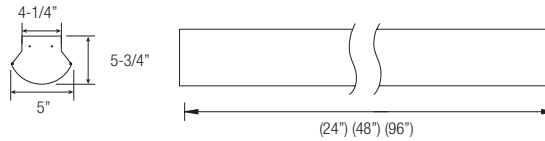




**NEW**



**CALCULATED**  
**L70**  
LIFETIME  
**50,000 HRS**

<b>6000</b> LUMENS	<b>8000</b> LUMENS	<b>14000</b> LUMENS	<b>20000</b> LUMENS
<b>48</b> WATT	<b>74</b> WATT	<b>114</b> WATT	<b>152</b> WATT
According to DLC Test Results	According to DLC Test Results	According to DLC Test Results	According to DLC Test Results

**APPLICATION:**

- General illumination for narrow area layouts
- Hallways/corridors, office buildings, schools, hospitals, public walkway areas, parking lots and industrial.

- Retail aisles or long narrow store format
- Library stacks and storage areas
- Design for general or task lighting
- Economical alternative to meet design and budget requirements



\* For list of qualified DLC fixture, please consult factory

**PRODUCT FEATURES:**

- Life tested to ensure light output up to 50,000 hours of operation to L70
- Tested to LM-79 and LM-80 standards
- Heavy-duty 20-gauge steel utilized throughout for durability and code compliance
- Pretreated with five-stage iron phosphate process to ensure superior paint adhesion
- Painted high-gloss baked white enamel
- Standard reflector comes in white highly reflective finish
- Frosted extruded lens delivers highly efficient volumetric light

- Shallow design is ideal for commercial and industrial spaces requiring general illumination
- Emergency battery back-up comes pre-installed on the fixture and emergency push button is installed on the fixture for easy access and aesthetics.
- Suitable for dry and damp environments
- Suitable for surface or suspended mounting
- Individual or continuous row mounting
- Lightweight design enables easier installation

LED  
OC1

**OPTICS** - The frosted extruded acrylic lens of the OC1-LED gather the light scattered by the LED chips and delivers highly efficient volumetric lighting to any environment. LEDs are spaced on board ideally to completely hide any LED image when fixture is installed and powered on. The lens can be easily removed without the use of tools, making the unit upgradable and easily maintained.

**OPTIONS** - Fixtures can be shipped pre-installed with daylight harvesting controls, occupancy sensors, and/or power pack. Available manufacturer options include Leviton, Hubble Automation, and others. The Wattstopper - **MS-FM105** Super High Frequency Occupancy Sensor is a line voltage sensor that turns lighting on and off based on occupancy, and can hold lights off when sufficient daylight is available. It detects motion via super high frequency (SHF) electromagnetic waves and the Doppler principle. MS-FM105 is installed behind fixture lenses and hidden from view.

**DIMMING** - The ASI5-LED comes standard with **DIM10**, 0-10V dimming on either 120 or 277V. Dimmable down to 1% of initial lumens. Also available in Lutron dimming options. Consult factory for dimmer compatibility. **LUTH** - Lutron Hilume Dimming down to 1% compatible with 3 wire and EcoSystem Controls available on all fixtures up to 50 Watts. **LUT2W** - Lutron 2 Wire Dimming down to 1% compatible with 2 wire and Forward Phase Control Systems available on all fixtures up to 50 Watts. **LUTFB** - Lutron Hilume Fade to Black Dimming down to 1% compatible with EcoSystem Controls available on all fixtures up to 75 Watts. **DIMST** - Step Dimming allows fixtures to be turned on at 100% or 50% is available for fixtures up to 50 Watts. **ELDO10.1** - EldoLED SoloDrive 0-10V. Dimming down to .1%. available on all fixtures up to 100 Watts. **ELDODALI** - EldoLED PowerDrive 0-10V. Dimming down to .1%. available on all fixtures up to 100 Watts. **ELDODMX** - EldoLED PowerDrive Dimming down to .1%. available on all fixtures up to 100 Watts. Please see EldoLED website for wiring diagrams and a list of compatible DMX and Dali control systems.

**ELECTRICAL** - Powered by high-quality constant-current power LED drivers which are rated for 50 to 60Hz at 120-277V input, produce less than 20% THD, and have a power factor of .90 to 1.00.

**QUALITY CONTROL** - Every fixture is turned on and rigorously tested by our QC Department before shipping.

**WARRANTY** - Limited 5 Year Warranty



LED General Linear Luminaire

**Ordering Information: Example: 4-OC1-LED-4000L-DIM10-MVOLT-30K**

FIXTURE SIZE	SERIES	TYPE	LUMENS	DIMMING	VOLTAGE	CCT	CRI	EMERGENCY	OTHER OPTIONS
8 - 8'	OC1-Oracle LED General Linear Luminaire	LED	6000L - (6000 lumens) 8000L - (9300 lumens) 14000L - (14300 lumens) 20000L - (19000 lumens)	DIM10 - 0-10V Dimming * DIMST - Step Dimming * LUTH - Lutron Hilume * LUT2W - Lutron 2Wire LUTFB - Lutron Fade to Black ELDO10.1 - EldoLED 0-10V ELDODALI - EldoLED DALI ELDODMX - EldoLED DMX	MVOLT 347* * Consult factory for details	30K - (3000K) 35K - (3500K) 40K - (4000K) 50K - (5000K)	85	0-EMG-LED	IMMS - Internal Motion Sensor OCGSS - Cable Gripper Suspension Kit OCVH - V Hook USA - Made in America Compliance WG - WireGuard
<b>WIRING OPTIONS</b>									
									FBF - Internal Fast Blow Fuse SBF - Internal Slow Blow Fuse RIS - Radio Interference Sensor

\* DIMST, LUTH and LUT2W dimming options are only available for the fixtures up to 5000 lumens.

# CONTROL OPTIONS



## Controls Installed on the Fixture



### LMFC-011

Fixture Will be Shipped Legrand Wattstopper DLM Enabled with LMFC-011 Module Controller Installed on the Fixture. Fixtures will be compatible with Legrand Wattstopper DLM Load Controllers, DLM Sensors, DLM Switches, DLM Remote Control, and DLM Configuration tool.

#### Switches



LMSW-105 LMDM-101

#### Remote



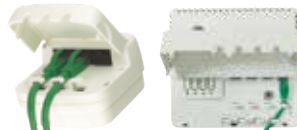
LMRH-105

#### Configuration tool



LMCT-100-2

#### Plug Load Controllers

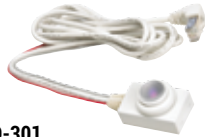


LMPL-101 LMPL-201

#### Sensors



LMDC-100 LMLS-400 LMLS-500



### FD-301

Fixture Will be Shipped with Legrand Wattstopper FD-301 (Integrated Daylight Dimming Photosensor) installed and FS-PP-V2 Fixture Power Pack.



FS-PP-V2



### FSP-202

Fixture Will be Shipped with Legrand Wattstopper FSP-202 (multi-level control based on motion and/or daylight contribution) installed.



### FSP-212

Fixture Will be Shipped with Legrand Wattstopper FSP-212 (multi-level control based on motion and/or daylight contribution) installed.

LED

Control Options



Philips EasySense sensors provide luminaire-level control with Occupancy sensing, Daylight harvesting, and Field task tuning.

## Controls Installed on the Fixture



### SRB

Fixture will be Shipped Sensor Ready with SRB Bridge . Fixture will be Compatible with EasySense Sensor SNS200-CMP which can be Added in the Field for Remote Mounting. Fixture May Only be Controlled with Philips Field App or Wireless Switches or any 0-10V. Wall Box Dimmer.



### PHILIPS-XSR + SNS200-CMP

Fixture will be Shipped Sensor Ready with PHILIPS-XSR driver and EasySense SNS200-CMP Sensor which is Included to be Remote Mounted. Fixture May Only be Controlled with Philips Field App or Wireless Switches



### SRB + SNS200-CMP

Fixture Will be Shipped Sensor Ready with PHILIPS SRB Bridge and EasySense SNS200-CMP Sensor which is Included to be Remote Mounted. Fixture May Only be Controlled with Philips Field App or Wireless Switches or any 0-10V. Wall Box Dimmer.

## Controls Provided by Philips



ZBT-S1AWH ZBT-S2AWH

Ilumra Wireless Switches



Philips Field App

# CONTROL OPTIONS

## EASYFIT by EnOcean

### Controls Options to be Installed on the Fixture

Self-powered sensors and switches, combined with LED fixture controllers and a commissioning tool, permit easy configuration, intelligent local control, and seamless integration into building automation systems.

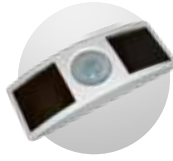


**LEDRU**  
LED Relay Zone  
Controller 0-10V



**LEDDU**  
LED Zone  
Controller 0-10V

### Controls Provided by EnOcean



**EOSCU**  
Occupancy Sensor  
Ceiling Mount



**EOSWU**  
Occupancy Sensor  
Wall Mount



**ELLSU**  
Daylight Sensor  
Ceiling Mount



**ESRPU/EDRPU**  
Wall Switches



**LEVITON**  
Wall Switches  
902 MHz category



**NWC 300U**  
Navigan Wireless  
Commissioner

## enlighted

Enlighted Smart Sensors features digital motion, ambient light, and temperature sensing, the device provides autonomous fixture-level control

### Controls Installed on the Fixture



#### PHILIPS-XSR + FS-D22

Fixture Will be Shipped with Enlighted FS-D22 Two-wire sensor Sensor installed and PHILIPS-XSR driver. Fixture May be Controlled with Enlighted Gateway, Energy Manager or Enlighted Room Controller WS-2-00



#### CU-E3-1R + SU-4E-00

Fixture Will be Shipped with Enlighted SU-4E-00 Sensor installed and Enlighted CU-E3-1R Control Unit Power Pack. Fixture May be Controlled with Enlighted Gateway, Energy Manager or Enlighted Room Controller WS-2-00

#### CU-E3-1R



Fixture Will be Shipped Sensor Ready with Enlighted CU-E3-1R Control Unit Power Pack. Fixture will be compatible with Enlighted SU-4E-00 Sensor which can be Added in the Field Remote Mounting. Fixture May be Controlled with Enlighted Gateway, Energy Manager or Enlighted Room Controller WS-2-00



#### PHILIPS-XSR

Fixture Will be Shipped Sensor Ready with PHILIPS-XSR driver. Fixtures will be compatible with Enlighted CS-D2 Two-wire sensor which can be Added in the Field for Remote Mounting. Fixture May be Controlled with Enlighted Gateway, Energy Manager or Enlighted Room Controller WS-2-00.

### Controls Provided by Enlighted



Gateway



**WS-2-00**  
Enlighted Room  
Controller

Switch



Programmable with Laptop



PoE Network Switch



Energy Manager

LED

Control Options

# CONTROL OPTIONS



## Controls Installed on the Fixture



**FCJS-010**  
Individual  
Fixture Control

Fixture Will be Shipped LUTRON VIVE Enabled with LUTRON FCJS-010 0-10V Control Module Installed on the Fixture. Fixtures will be compatible with Lutron FC-SENSOR Occupancy/Daylight Sensor or FC-VSENSOR Vacancy/Daylight Sensor which can be Added in the Field for Remote Mounting. Fixture May be Controlled with any Vive control systems. Fixtures must be ordered with a 0-10V. Driver.



**FCJS-ECO**  
Individual  
Fixture Control

Fixture Will be Shipped LUTRON VIVE Enabled with LUTRON FCJS-ECO EcoSystem Control Module Control Module Installed on the Fixture. Fixtures will be compatible with Lutron FC-SENSOR Occupancy/Daylight Sensor or FC-VSENSOR Vacancy/Daylight Sensor which can be Added in the Field for Remote Mounting. Fixture May be Controlled with any Vive control systems. Fixtures must be ordered with a Lutron Driver.

## Controls Provided by Lutron



Lutron  
App



Vive Wireless Hub



DayLight  
Sensor



Ceiling Mount  
Occupancy Sensor



Ceiling Mount  
Occupancy/Daylight  
Sensor



Wall Mount  
Occupancy Sensor



Wall Mount  
Switch



Pico  
Remote



Fixture will be shipped with Leviton ZL027-N0W power control module installed on the fixture. Fixtures will be compatible with Leviton ZL00J-D0W sensor control module which can be added in the field for remote mounting. Fixture must be controlled with Leviton Intellect Keypad Room Controller, or Leviton Neuron App.



**ZL027-N0W**  
Power control module



**ZL00J-D0W**  
Sensor control module

## Leviton Keypad



**ZLDNK-1W**



**ZLDNK-2W**



**ZLDNK-4W**



**ZLDNK-8W**

Intellect™ Keypad Room  
Controller (Required)

## Leviton App



Neuron App

LED

Control Options

# PHOTOMETRY DATA

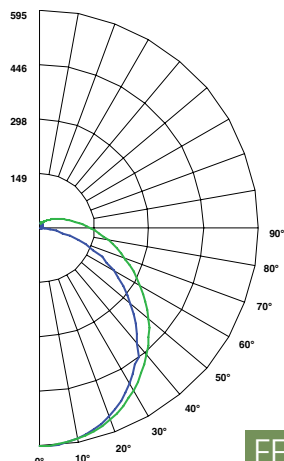
## 4-OC1-LED-2000L-DIM10-120-40K

WATTAGE: 24W

LUMENS: 2062

TOTAL LUMINAIRE EFFICACY: 87

### Candle Power Distribution (Candelas)



### Zonal Lumens Summary

Zone	Lumens	%Lamp	%Fixt
0-30°	459.74	N.A.	22.30
0-40°	751.21	N.A.	36.40
0-60°	1334.85	N.A.	64.70
0-90°	1851.16	N.A.	89.80
0-180°	2061.76	N.A.	100.00

### Luminance Data (cd/sq.m)

Angle In Degrees	Average		
	0°	45°	90°
45°	4250	4557	4845
55°	3924	4494	4999
65°	3619	4602	5448
75°	2707	5343	6867
85°	1298	10683	15203

### Candela Tabulation

	0	45	90
0	595.039	595.039	595.039
5	593.270	592.870	592.690
15	569.740	572.120	573.780
25	521.870	530.270	536.330
35	452.950	469.140	483.220
45	368.920	395.520	420.480
55	276.270	316.370	351.960
65	187.760	238.750	282.600
75	86.010	169.740	218.160
85	13.890	114.290	162.640
90	1.650	92.090	138.540

### Spacing Criteria

0-180	: 1.24
90-270	: 1.28
Diagonal	: 1.38

**EFFICACY: 87 LM/W**

### Coefficients of Utilization - Zonal Cavity Method

Effective Floor Cavity Reflectance 20% = PF

RC	RW	80%				70%				50%				30%				10%				0%			
		70%	50%	30%	10%	70%	50%	30%	10%	50%	30%	10%	50%	30%	10%	50%	30%	10%	50%	30%	10%	0%			
0	117	117	117	117	113	113	113	113	105	105	105	99	99	99	99	93	93	93	93	90	90	90	90		
1	105	99	94	90	101	96	91	87	90	86	83	84	81	78	79	76	74	71	71	71	71	71	71		
2	95	86	78	72	91	83	76	70	77	72	67	73	68	64	68	64	61	58	58	58	58	58	58		
3	86	75	66	59	82	72	64	58	68	61	56	64	58	53	60	55	51	49	49	49	49	49	49		
4	78	66	57	50	75	64	55	49	60	53	47	57	50	45	53	48	44	41	41	41	41	41	41		
5	72	59	50	43	69	57	48	42	54	46	41	51	44	39	48	42	38	35	35	35	35	35	35		
6	66	53	44	37	64	51	43	37	48	41	35	46	39	34	43	38	33	31	31	31	31	31	31		
7	62	48	39	33	59	47	38	32	44	37	31	42	35	30	40	34	29	27	27	27	27	27	27		
8	57	44	35	29	55	42	34	29	40	33	28	38	32	27	36	31	26	24	24	24	24	24	24		
9	53	40	32	26	52	39	31	26	37	30	25	35	29	24	34	28	24	22	22	22	22	22	22		
10	50	37	29	24	48	36	28	23	34	27	23	33	26	22	31	26	22	22	22	22	22	22	22		

RC - Ceiling Cavity Reflectance RW - Wall Reflectance

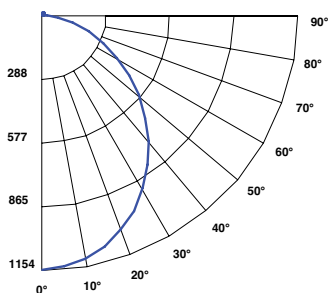
## 4-OC1-LED-4000L-DIM10-MVOLT-35K

WATTAGE: 36.9

LUMENS: 4113

TOTAL LUMINAIRE EFFICACY: 111

### Candle Power Distribution (Candelas)



### Zonal Lumens Summary

Zone	Lumens	%Lamp	%Fixt
0-30°	892.56	N.A.	21.70
0-40°	1461.35	N.A.	35.50
0-60°	2618.86	N.A.	63.70
0-90°	3687.96	N.A.	89.70
0-180°	4112.87	N.A.	100.00

### Luminance Data (cd/sq.m)

Angle In Degrees	Average		
	0°	45°	90°
45°	795	912	1042
55°	710	909	1100
65°	616	934	1219
75°	463	1114	1552
85°	197	2276	3460

### Candela Tabulation

	0	45	90
0	1153.911	1153.911	1153.911
5	1143.630	1144.854	1148.787
15	1085.265	1096.686	1115.235
25	976.914	1009.494	1052.397
35	828.603	891.900	967.617
45	656.946	753.390	860.940
55	475.947	609.444	736.947
65	304.029	461.376	602.154
75	140.004	336.771	469.494
85	20.097	231.795	352.350
90	2.700	189.441	299.376

### Coefficients of Utilization - Zonal Cavity Method

Effective Floor Cavity Reflectance 20% = PF

RC	RW	80%				70%				50%				30%				10%				0%			
		70%	50%	30%	10%	70%	50%	30%	10%	50%	30%	10%	50%	30%	10%	50%	30%	10%	50%	30%	10%	0%			
0	117	117	117	117	113	113	113	113	105	105	105	99	99	99	93	93	93	93	90	90	90	90	90		
1	104	99	94	89	100	95	91	87	89	85	82	83	80	78	78	76	74	71	71	71	71	71	71		
2	94	85	78	71	90	82	75	70	77	71	66	72	67	63	68	64	60	58	58	58	58	58	58		
3	86	74	65	59	82	72	64	57	67	61	55	63	57	53	59	55	51	48	48	48	48	48	48		
4	78	65	56	49	75	63	55	48	60	52	46	56	50	45	53	47	43	40	40	40	40	40	40		
5	72	58	49	42	69	57	48	41	53	46	40	50	44	39	47	42	37	35	35	35	35	35	35		
6	66	52	43	37	63	51	42	36	48	40	35	45	39	34	43	37	33	30	30	30	30	30	30		
7	61	47	38	32	59	46	38	32	44	36	31	41	35	30	39	33	29	27	27	27	27	27	27		
8	57	43	34	29	55	42	34	28	40	33	27	38	31	27	36	30	26	24	24	24	24	24	24		
9	53	40	31	26	51	39	31	25	37	30	25	35	28	24	33	27	23	21	21	21	21	21	21		
10	50	36	28	23	48	36	28	23	34	27	22	32	26	22	31	25	21	19	19	19	19	19	19		

RC - Ceiling Cavity Reflectance RW - Wall Reflectance

**EFFICACY: 111 LM/W**

LED OC1

LED General Linear Luminaire